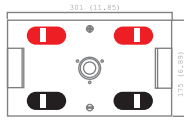
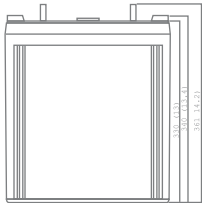


Specification

Nominal Voltage	2 volts		
Nominal Capacity	77° F (25° C)		
20-hr. (30A)	600 Ah		
10-hr. (55.8A)	558 Ah		
5-hr. (102A)	510 Ah		
1-hr. (360A)	360 Ah		
Approximate Weight	81.6 lbs (37 kgs)		
Internal Resistance (approx.)	4 mOHMS		
Shelf Life (% of normal capacity at 77° F (25° C))			
3 Months	6 Months	12 Months	
91%	82%	64%	
Temperature Dependency of Capacity	(20 hour rate)		
104° F	77° F	32° F	5° F
102%	100%	85%	65%
Charge Method (Constant Voltage)			
Cycle Use (Repeating Use)			
Initial Current	120A or smaller		
Control Voltage	2.45 V		
Float Use			
Control Voltage	2.28 V		

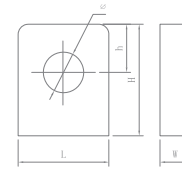


Physical Dimensions: in (mm)



L: 11.85in (301 mm)
W: 6.86in (175 mm)
H: 13in (330 mm)
TH: 14.2in (361 mm)
 Tolerances are +/- 0.04 in. (+/- 1mm) and +/- 0.08 in. (+/- 2mm) for height dimensions. All data subject to change without notice.

Terminals

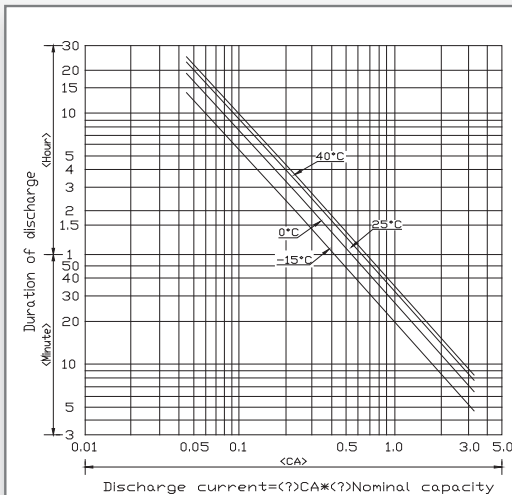


L Series (L Type Terminal)

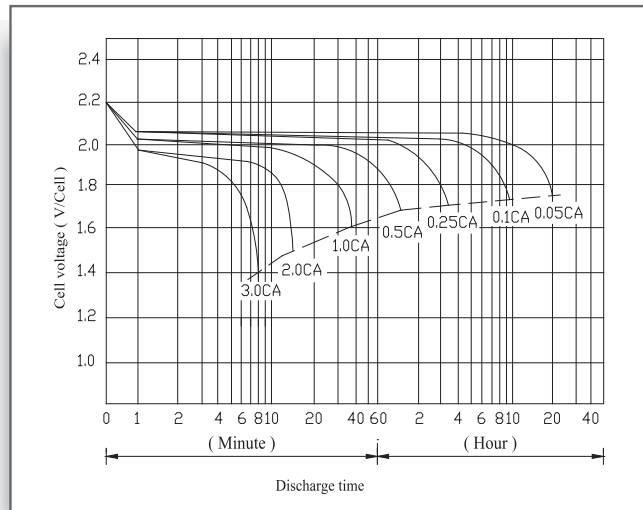
Dimension Type	L	W	H	h	ø
L4	25.5	10	31.5	12.0	9.8

Physical Dimensions: in (mm)

Discharge Time vs. Discharge Current



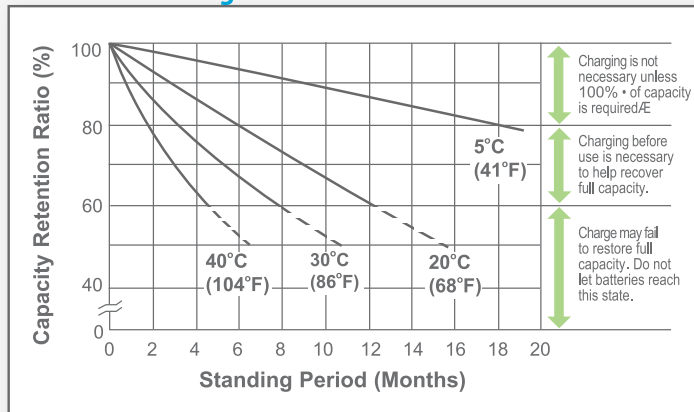
Discharge Characteristics



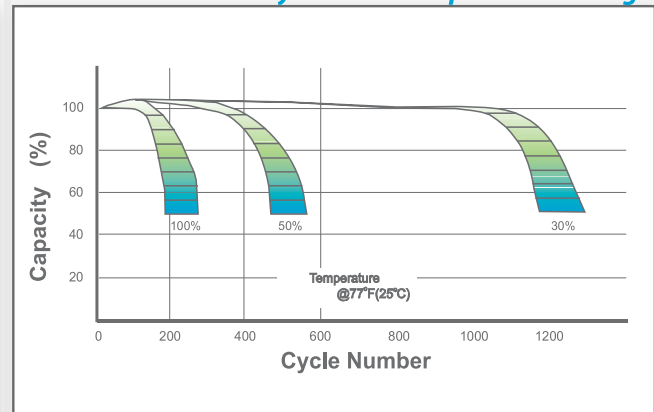
UB26000

Maintenance-Free

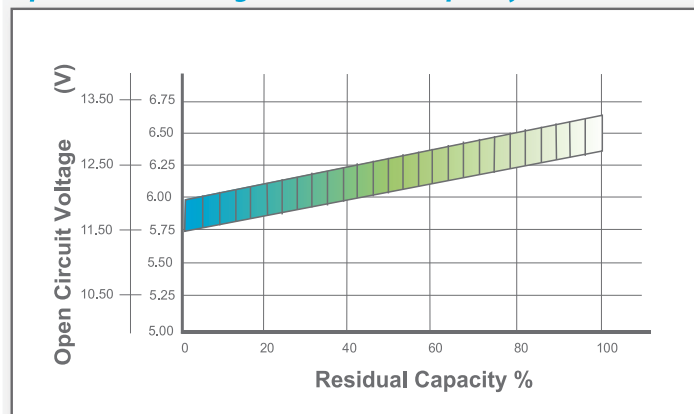
Shelf Life & Storage



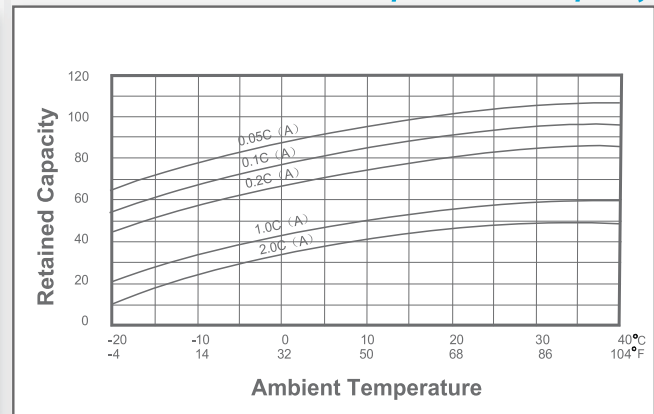
Cycle Life vs Depth of Discharge



Open Circuit Voltage vs Residual Capacity



Effect of Temperature on Capacity



Charge Current & Final Discharge Voltage

Application	Charge Voltage(V/Cell)			Max.Charge Current	Final Discharge Voltage V/Cell	1.75	1.70	1.60	1.30
	Temperature	Set Point	Allowable Range						
Cycle Use	25°C (77°F)	2.45	2.40~2.50	0.3C	Discharge Current(A)	0.2C>(A)	0.2C<(A)<0.5C	0.5C<(A)<1.0C	(A)>1.0C
Standby	25°C (77°F)	2.325	2.30~2.35						



ISO 9001 :2008

Let UPG Power Your Life.

www.upgi.com